

5-Speed Transmission

Index

Clean all parts thoroughly in solvent and dry with compressed air.

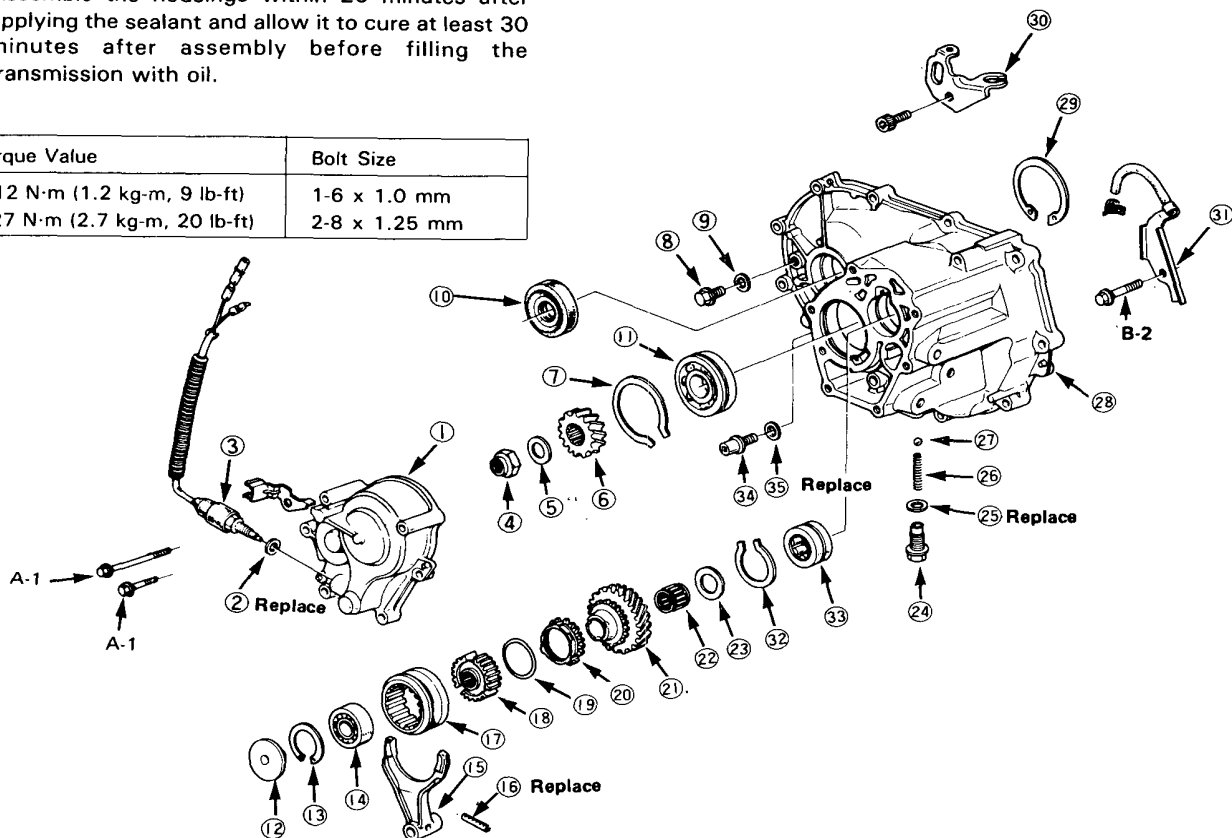


Lubricate all parts with oil before reassembly.

NOTE: This transmission uses no gaskets between the major housings; use Honda P/N 08740-99986 sealant.

Assemble the housings within 20 minutes after applying the sealant and allow it to cure at least 30 minutes after assembly before filling the transmission with oil.

Torque Value	Bolt Size
A-12 N·m (1.2 kg-m, 9 lb-ft)	1-6 x 1.0 mm
B-27 N·m (2.7 kg-m, 20 lb-ft)	2-8 x 1.25 mm



- ① 5th GEAR HOUSING
- ② 14 mm WASHER
- ③ BACK-UP LIGHT SWITCH
25 N·m (2.5 kg-m, 18 lb-ft)
- ④ COUNTERSHAFT LOCKNUT
110 N·m (11.0 kg-m, 80 lb-ft)
- ⑤ SPRING WASHER
- ⑥ COUNTERSHAFT 5th GEAR
- ⑦ 65 mm SNAP RING
- ⑧ OIL FILLER BOLT
45 N·m (4.5 kg-m, 33 lb-ft)
- ⑨ SEALING WASHER
- ⑩ SEAL
- ⑪ COUNTERSHAFT BALL BEARING
- ⑫ OIL GUIDE PLATE

- ⑬ SNAP RING
- ⑭ MAINSHAFT BALL BEARING
- ⑮ 5th GEAR SHIFT FORK
- ⑯ SPRING PIN
- ⑰ 5th GEAR SYNCHRO SLEEVE
- ⑱ 5th GEAR SYNCHRO HUB
- ⑲ SYNCHRO SPRING
- ⑳ 5th GEAR SYNCHRO RING
- ㉑ 5th GEAR
- ㉒ NEEDLE BEARING
- ㉓ THRUST WASHER
- ㉔ DETENT BALL RETAINER SCREW
22 N·m (2.2 kg-m, 16 lb-ft)
- ㉕ SEALING WASHER
- ㉖ DETENT SPRING

- ㉗ DETENT BALL
- ㉘ TRANSMISSION HOUSING
- ㉙ 72 mm SNAP RING
- ㉚ CLUTCH CABLE BRACKET
- ㉛ BREATHER TUBE ASSEMBLY
- ㉜ 45 mm SNAP RING
- ㉝ NEEDLE BEARING
- ㉞ OIL DRAIN PLUG
40 N·m (4.0 kg-m, 29 lb-ft)
- ㉟ SEALING WASHER



NOTE: Always clean the magnet (48) whenever the transmission housing is disassembled.

Torque Value	Bolt Size
A-12 N·m (1.2 kg-m, 9 lb-ft)	1-6 x 1.0 mm
B-14 N·m (1.4 kg-m, 10 lb-ft)	2-8 x 1.25 mm
C-24 N·m (2.4 kg-m, 17 lb-ft)	

